



*Highlife<sup>®</sup> Collection*



## HIGHLIFE® COLLECTION

### CONTENTS

Your Hot Tub Experience	4
Customer Reviews	12
Design Innovation	14
Unparalleled Massage	20
Easy Water Care	24
Advanced Efficiency	28
Simple Controls	30
Remote Spa Monitoring	32
Hot Tub Cooling System	34
Wireless Entertainment	36
Convenient Access	38
Excellent Customer Care	40

### Spa Models:

Grandee®	44
Envoy®	45
Aria®	46
Vanguard®	47
Sovereign®	48
Prodigy®	49
Jetsetter®	50

Warranty	51
----------	----





*Every day made better<sup>®</sup>*

# *Imagine the possibilities...*

It's 6 A.M. You admire a rising sun as your day begins in your Hot Spring® spa. The rigors of your everyday life are on pause.

Surrounded by nature.  
You think to yourself... life is good.

As the makers of Hot Spring spas, we are passionate about your hot water experience. As hot tubbers ourselves, we know how much better you feel when you spend time in your spa. By making your hot tub a part of your daily ritual, you can get more out of each day. That is why we are committed to providing you with The Absolute Best Hot Tub Ownership Experience®, so that you can be at your absolute best every day.

A close-up, profile view of a man's face and hands. He is holding a white ceramic mug with both hands. The background is a blurred hot tub with bubbling water, suggesting a relaxing outdoor setting. The lighting is bright and natural, likely from the sun.

This is your moment

*“Just 15 minutes is an amazing stress eraser, and it’s quickly become an important part of my routine. It really helps me feel and be my best.”*

*– Vanguard® owner, Philadelphia, PA*

# Wellness awaits you

An important part of a healthy lifestyle, your Hot Spring® spa can become your massage therapist, or even your life coach. All of this culminates in one spectacular experience that you can enjoy as often as you like...just steps outside your back door.

Make your personal wellness a priority with a Highlife® Collection spa in your backyard. Immersed in the warm water, your body responds physiologically – your body temperature rises, your blood flow increases which improves circulation, and the buoyancy of the water makes you feel weightless, relieving joint stress. As a result of all these physiological changes, like magic, you feel better mentally, physically and emotionally.

## Take care of yourself



*“Your aches and pains vanish when you spend even 15 minutes in your Aria hot tub at the end of the day. One of the best investments we have ever made in our health and well-being.”*

*– Aria® owner, Red Bluff, CA*

*“Best purchase ever.  
Many quality family  
talks and we love that  
the kids bring their  
friends to our house  
for entertaining.”*

*– Grandee® owner, Granger, IN*



Your guard comes down,  
your family opens up



## *Better than dinner table conversations*

Perfectly relaxed, your family is at ease and the conversation begins to flow. No one is texting, tweeting, or checking email – the smartphones have been left inside. A sense of gratitude sweeps over you as you realize your life becomes fuller and your relationships grow stronger with every moment spent together in your Hot Spring® spa.

Hot Spring owners are often surprised by the benefits of spending time in their spa. They expect soothing massage from the jets and stress relief from the calming warm water. They don't expect to find that their relationships improve, too. One longtime Hot Spring owner called this experience *"hydrotherapy for the soul."*

# *The greatness of nature*

These days we spend most of our lives indoors – in offices and classrooms, in cars as we commute to and from work and school, in the house doing chores, watching TV, or on our mobile devices. When was the last time you spent some time in the great outdoors?

One of the best parts of owning a Hot Spring® spa is the time spent outside. Settle into the warm water for the first falling snow. Count shooting stars with your kids on a dark night. Breathe in the autumn air as the leaves begin to change. The contrast between the cool air and the hot water makes you feel alive. As you relax in your spa, you find the time to recognize how much beauty has been right in front of you all along.



Experience the night sky like never before

*“This is my second Jetsetter spa. I love the intimacy of the tub, sharing it only with my wife. Watching the stars under the Sarasota sky is truly heaven.”*

*– Jetsetter® owner, Sarasota, FL*

# *A promise you can believe in*

We realize that you have choices when it comes to selecting a spa brand. We want you to know that, as the makers of Hot Spring® spas, we do things differently, from the way we build our spas to our customer care.

We invest in quality and we are committed to providing you with The Absolute Best Hot Tub Ownership Experience® so that you can enjoy the benefits of owning a spa every day for years, and even decades, to come. But, we don't expect you to take our word for it. We asked the people who know us best – our owners – to share their experiences.

Here is a sampling of what Hot Spring® owners have to say about their Highlife® Collection spa:

**“This is our third Jetsetter and we love them. Best jets, best energy, best service. Get one. You will be amazed. Life changing.”**

– United States

**“This is my third Hot Spring Spa, had two Classics before this one. Best money ever spent... I’m in it, if not daily, several times a day. Wife said she would bury me in it. Fine with me.”**

– Panama City, FL

**“This is our second Hot Spring hot tub. Our first one lasted 19 years and was still running... My husband and I look forward to our relaxing, quality time together in the spa about 5 nights a week!”**

– Tuckerton, NJ

**“In 1996 we purchased a used Hot Spring Spa and since then we have used it almost every night for 30 minutes. After 17 years we decided to trade it in for a new Prodigy. The only way to relax.”**

– Jacksonville, NC

**“Our spa is great - always ready, always clean, and SO relaxing after a long day at work. Haven’t noticed a difference in my electricity bill. My wife and I both say we should have purchased this spa years ago.”**

– Odessa, FL

**“Water care is easy. Energy usage was exactly as advertised. Quality is excellent. My fear was we would stop using it after the novelty wore off. We still use it 4-5 times a week!”**

– Auburn, WA

**“Best money I ever spent. I go in every morning and every night. Love how easy the salt water system is to take care of, so worth the money. I’m a very happy hot tubber!”**

– Northhampton, MA

**“I use my 2004 Jetsetter daily, when I wake up and to go to sleep. I love the dependability; it is always ready for me no matter the time of day. A top notch quality product that I can create memories in daily.”**

– Houston, TX

EVERY DAY MADE BETTER™  
See more of what our customers are saying about Highlife spas.  
**Visit**  
**HotSpring.com/Reviews**

# Expertly designed

**Designworks**  
A BMW Group Company

With help from world-renowned design experts at **Designworks, a BMW Group Company**, we set out to redefine the way a hot tub looks in your backyard. Using a blank canvas approach, the Hot Spring® design team and Designworks developed an entirely new, integrated design that makes a Hot Spring spa look more like an exquisite piece of furniture and a beautiful focal point in your outdoor space.



### *Waterfall Corner Design*

At each corner, a waterfall-like detail gives the impression that the shell is flowing over the cabinet, and helps visually integrate the shell and cabinet.



### *Moto-Massage® DX Jet*

Colorful light shines brightly through the frosted acrylic faceplate of this signature jet. The comfortable pillow complements the trapezoidal design used throughout the spa's interior.

# An unparalleled hot tub experience



## ***Form Follows Function***

Every feature of the visually stunning Highlife® Collection has been thoughtfully designed. Simple, elegant and functional, you will find that your Highlife Collection spa seamlessly integrates into your home and your life.

# Beauty is in the details



## *Beautiful, Comfortable Shells*

Every Highlife® Collection spa shell has been designed to deliver a better spa experience.

- Sculpted seats cradle your body in a natural position.
- Spacious shell design minimizes overflow and helps keep more water in the spa.
- Clean lines along the bartop leave ample room for drinks.
- Elegant styling is incorporated throughout the spa's interior.
- The unique footwell pattern feels great on your feet.

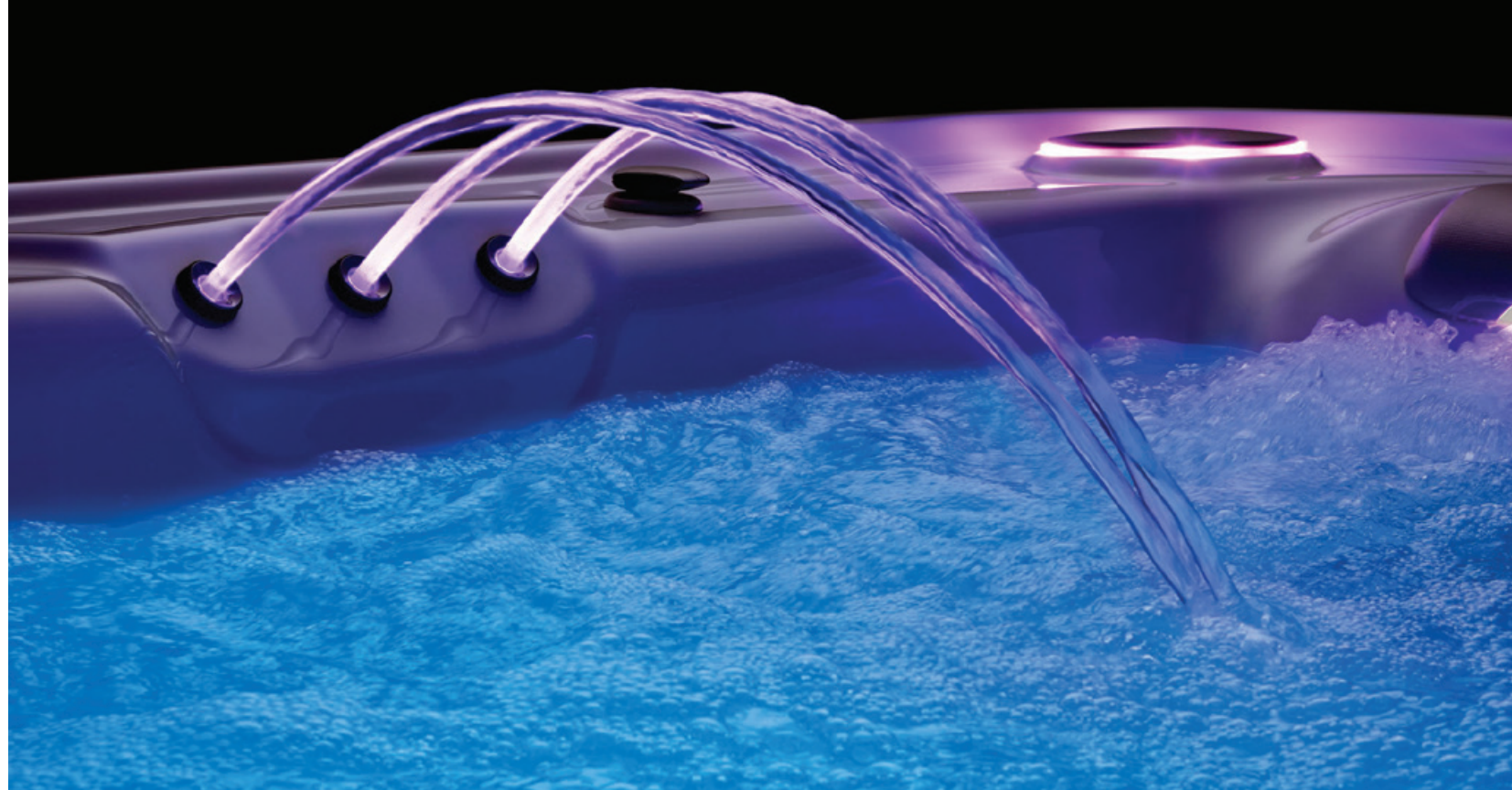


### ***Water Dances***

Enhance your hot tub experience with the sights and sounds of the exclusive BellaFontana® water feature. Three colorful backlit arcs of water converge to create this elegant fountain that you will enjoy from inside or outside your spa. *Included on most HighLife Collection models.*

### ***Light Your Night***

Create subtle lighting on an otherwise dark night, or a medley of color for your next outdoor gathering. Our multi-zone Luminescence® lighting system lets you easily select custom lighting to suit your mood.



### ***Completing the Vision***

Even seemingly minor details, like the air control and diverter levers, were reengineered to work in harmony with the overall design.



# Contemporary cabinet and shell design

## Stunning Cabinet and Shell Colors

The color, finish, and materials experts at **Designworks, a BMW Group Company**, helped us carefully select a distinctive palette of cabinet,

shell and cover color options. Every color decision was carefully considered in order to complete the overall design.

## Everwood® HD

Your spa cabinet is typically the part of the spa you see most, yet it is among the least talked about features – until now. We pioneered the concept of synthetic wood siding for easy care

almost two decades ago, and have created the next generation – Everwood HD. This high-definition finish offers a richer wood grain, along with the low-maintenance and durability of our original Everwood.



## Everwood HD Cabinet Colors:

Mocha

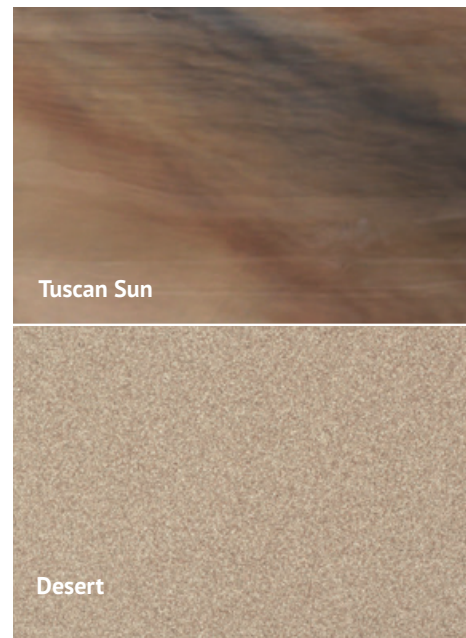
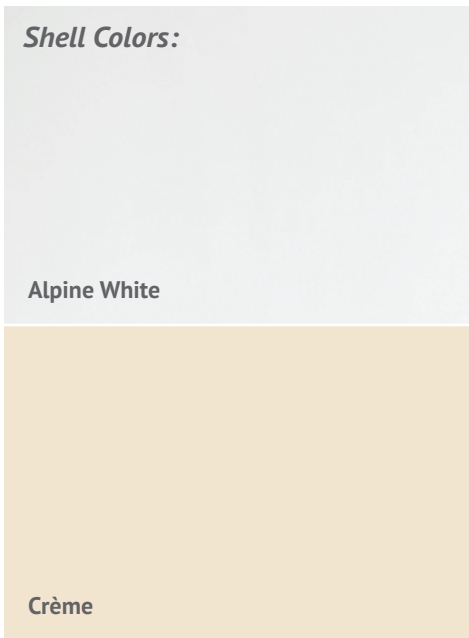
Teak

Monterey Gray

### **Elegant Shell Colors**

With expert insight, we selected shell colors specifically for the Highlife Collection: Alpine White, Crème and Ice Gray. These elegant neutral tones have broad appeal – ranging from traditional to modern tastes.

Choose the Platinum shell for a silver matte finish or Tuscan Sun for the rich look of granite. The Desert shell is perfect for those who prefer a more textured finish.



### **Covers**

Every Highlife® Collection cover is UL classified in accordance with ASTM safety standards. Child-resistant safety locks can be locked with a key. Reinforced, adjustable straps help keep your cover securely in place.



*Some color combinations are considered special orders. Ice Gray/Teak, Crème/Monterey Gray, Desert/Monterey Gray and Platinum/Teak have special order pricing. See your dealer for details.*



# *Massage that makes your day*

Working late. Long commutes.  
Tough workouts. Long runs.  
Sore back. Achy muscles.  
Soccer practice. Homework projects.

When the realities of life take their toll on your mind and body, let the soothing jets of a Hot Spring® spa relieve the physical and mental stress that can wear you down. The warm water and massage of a Hot Spring spa can become an important part of your everyday wellness routine, helping you feel your very best.

## A back massage like no other

### ***Moto-Massage® DX Jet***

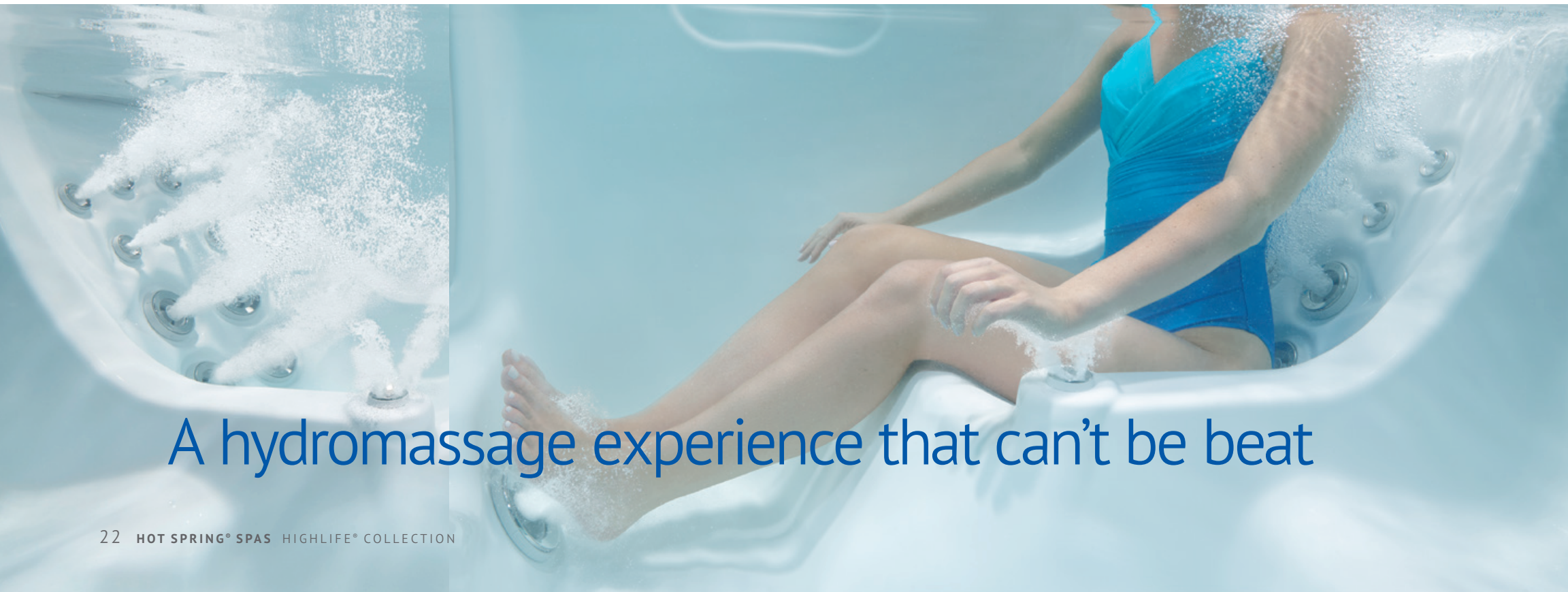
More than 30 years ago, we patented the very first moving hydrotherapy jet. Today, our next-generation Moto-Massage DX jet still provides Hot Spring owners with an unparalleled hydromassage experience.

Exclusive to Hot Spring, the Moto-Massage DX jet delivers two powerful streams of water that sweep up and down the entire length of your back. Meanwhile, four Precision® jets positioned above every Moto-Massage DX jet vigorously massage your neck and shoulders. Together, these jets work in harmony to melt away tension and soreness.



# All jets are not created equal

Highlife® Collection spas feature up to seven different jets – in addition to the exclusive Moto-Massage® DX Jet. In order to provide the right amount of pressure and massage for different muscle groups, each jet provides a distinct experience. Trust us when we say, “When you get out of your spa, you don’t feel the same as you did when you got in.”



A hydromassage experience that can't be beat



**SOOTHINGSTREAM® JET**

A broad stream of water is dispersed through 12 ports to gently relieve tension in your shoulders and upper back.



**JETSTREAM® JET**

Our most powerful jet is strong enough to provide relief to aching feet and release tension deep in your lower back.



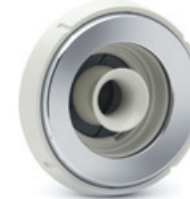
**ROTARY HYDROMASSAGE JET**

A powerful rotating stream provides a deep massage to all parts of your back.



**DIRECTIONAL HYDROMASSAGE JETS**

Customize your massage by directing a powerful flow of water where you need it most.



**HYDROSTREAM® JETS**

This mid-sized jet creates a high-pressure massage.



**ROTARY PRECISION® JETS**

Like the fingers of a masseuse, the rotating nozzle focuses on delicate areas like your wrists. *On select models*



**DIRECTIONAL PRECISION JETS**

Relieve tension in targeted areas of your back, neck and calves.



**Feels Just Right**

Create the perfect amount of pressure with our ComfortControl® system. Simply adjust the strength of each jet by rotating the jet face or turning the bartop air control levers. To help you save on energy costs, our SmartJet® system allows you to direct power to specific groups of jets, instead of powering all the jets at the same time.



*Water care that is simply brilliant*



**ACE**<sup>™</sup>  
SALT WATER SYSTEM



# Spend more time creating memories and less time caring for water

## **Exclusive, patented ACE® Salt Water System**

Optional on all Highlife® Collection spas, this revolutionary, low-maintenance system cleans the water automatically. With sparkling water that's ready whenever you are, you'll spend minimal time caring for water and more time in it. That helps you get the most from your Hot Spring spa...and from every day.

## **More Natural**

Enjoy fewer chemicals and more natural spa water. Only the ACE System creates "active oxygen" and other powerful cleaners from just a little bit of salt and your spa water. So, there are fewer chemicals added.

## **Simple Care**

With easy-to-care-for spa water that looks, feels and smells great, you'll spend more time in a Hot Spring® spa.

## **Feels Better**

Forget about the dry skin, irritated eyes or chlorine odor. Using patented diamond technology, only the ACE System eliminates contaminants that impact water quality.

*\*Visit [HotSpring.com/save-water](http://HotSpring.com/save-water) to learn more.*



**ACE Ready**

*This highly effective, low-maintenance salt water system is a Hot Spring® exclusive that saves time, chemicals and helps spa water last up to \*12 months.*

# Always filtered, always sparkling

Crystal clear spa water is essential to your spa experience, which is why we put so much thought into developing technologies that help ensure your spa water is always filtered and ready for you.

## 100% No-Bypass Filtration

All the water in your Highlife® Collection spa is filtered all the time. In other spas, water bypasses the filters when the jets are on – which is when you need filtered water the most. Our Highlife Collection spas include up to five filters enabling all the water to pass through the filters, even when the jets are running. Highlife Collection spas are the only spas with 100% no-bypass filtration.

## Tri-X® Filters

Tri-X filters use exclusive three-dimensional technology to filter significantly more water than standard paper filters – which makes them an important part of our 100% no-bypass filtration system. Plus, they are longer-lasting, and dishwasher-safe for added convenience. *Optional on Prodigy® and Jetsetter® models.*

## EverFresh® Water Care System

Our Everfresh® water care system combines three elements—ozone, silver ions, and MPS non-chlorine shock—to safely sanitize spa water using a minimal amount of chlorine.

1. The **FreshWater® III ozone system** injects millions of tiny, highly concentrated ozone bubbles into the water, neutralizing contaminants on contact. Standard on all models.
2. The optional **FreshWater<sub>Ag+</sub>® silver ion cartridge** introduces silver ions into the water to inhibit bacteria growth.
3. **FreshWater MPS non-chlorine shock** oxidizes contaminants, removes odor and brightens dull water.

## Customized Water Care Solutions

No matter which option you choose – we have a solution to fit your needs. Our exclusive FreshWater line of high-quality, bottled water care products, plus innovations like our Vanishing Act® calcium remover and CleanScreen® pre-filter, allow you to start with the best water quality possible. Your Hot Spring® Sales Professional can help you choose the water care program that is right for you.



No-Bypass  
Filtration

*Only Highlife Collection spas include up to five filters enabling all the water to pass through the filters, even when the jets are running.*



A large, dark-colored Hot Spring spa is the central focus, situated on a patio. The spa has a light-colored top and is surrounded by lush tropical plants and palm trees. In the background, a modern house with large windows is visible, and a string of warm-toned spherical lights hangs across the scene. The sky is a mix of orange and blue, suggesting sunset or dusk.

*Hot water that doesn't  
give you cold feet*

**Your Hot Spring® spa will be there – hot and ready – when you need it. You can rest assured that our innovations in energy efficiency will keep energy usage to a minimum and deliver unmatched value over time.**

# Absolutely efficient in every way

## The EnergySmart® System

You won't have to worry about high energy bills because Highlife® Collection spas feature our comprehensive EnergySmart system, which keeps the water at your desired temperature while using the least amount of energy possible.



**Totally Insulated** Full foam insulation, the same material found in commercial freezers, is applied in multiple layers of varying density to maximize energy efficiency. This exclusive technique helps eliminate gaps and voids in the foam that can increase energy usage.

**We've Got You Covered** We manufacture our own spa covers to ensure a tight seal that locks in heat. The dense foam cover features child safety locks and is UL-listed to ASTM standards for safety. Highlife Collection spas feature an energy-saving hinge seal, which prevents heat from escaping at the center of the spa cover.

**No-Fault® Heater** A unique titanium housing and heater element maximize heat transfer to the water and deliver unmatched corrosion resistance. In fact, our patented No-Fault heater is warrantied for five years, regardless of water chemistry.

**Silent Circulation** The SilentFlo 5000® circulation pump continuously circulates spa water 24 hours a day using less power than a 40-watt

light bulb. A dedicated circulation pump prevents the need for the high-powered jet pumps to circulate the water, reducing energy costs and wear.

**Recycled Heat** Our patented pump shroud captures heat generated in the spa's equipment compartment and transfers it to the water to minimize cooling and reduce energy consumption.

## Energy Costs

Your actual energy costs will depend on the model you own, how often you use it, the temperature you set, the temperature outside, and the cost of electricity where you live. The energy table to the right presents estimated energy consumption of a mid-sized Highlife Collection spa in heavy use.

## We Set the Standard

Hot Spring has certified all models to the stringent California Energy Commission (CEC) standards and APSP 14, the national energy efficiency standard for portable spas.

## Monthly Cost Estimates

### Kilowatt Hours x Rate per Kilowatt Hour

Temp = Approx. Annual Mean Ambient Temp. in Degrees Fahrenheit  
 kWh = Approx. Average Kilowatt Hours per Month to Operate Spa\*  
 Rate = Approx. Average Rate Charged per Kilowatt Hour in Dollars\*\*  
 Cost = Approx. Average Monthly Energy Cost to Operate Spa\*

City	Temp	kWh	Rate	Cost
Miami, FL	75°	100	\$0.11	\$11.20
Las Vegas, NV	70°	122	\$0.12	\$14.64
Macon, GA	65°	144	\$0.12	\$17.28
Tulsa, OK	60°	166	\$0.10	\$16.60
Seattle, WA	55°	188	\$0.10	\$17.86
Chicago, IL	50°	210	\$0.13	\$27.30
Casper, WY	45°	231	\$0.12	\$26.57
Calgary, Canada	40°	253	\$0.06***	\$15.18***
International Falls, MN	35°	275	\$0.13	\$35.75
Fairbanks, AK	30°	297	\$0.21	\$62.37

\* Based on a medium-sized Highlife Collection spa set at 102°F used 6 times per week, 15 minutes with the jets on, 15 minutes with the jets off during each use. Testing conducted by an independent third party certified laboratory in a Controlled Environmental Chamber at multiple ambient temperatures using continuous Data Acquisition monitoring of watts, temperature and humidity, with all equipment rigorously calibrated to ensure data accuracy. Individual energy consumption will vary depending on water set temperature, actual consumer usage patterns, and actual environmental ambient conditions.

\*\* Based on rates from the U.S. Energy Information Administration, November 2017. Rates are subject to change—check with your local electricity provider for the current rate in your area.

\*\*\* In Canadian dollars; based on rates from the Alberta Energy.



*Advanced controls,  
simple operation*

Get lost in conversation, not timers or temperature settings. With the most advanced and intuitive controls available, HighLife® Collection spas are easy to operate.

# Control functions that work for you

## ***Set It and Forget It***

The IQ 2020® spa control system makes your Highlife® Collection spa simple to operate, with no programming required. To heat your spa, simply decide what water temperature you like, then “set it and forget it.” In the event of a power outage, the spa automatically resumes normal operation once power is restored.

## ***Simple Operation***

Highlife Collection spas feature the latest in touchscreen spa control technology. The large waterproof, color LCD touchscreen serves up intuitive icons and menus that are easy to read by day or night.



## ***Ready, Set, Soak***

Be confident that your Hot Spring® spa is hot and ready before you even step outside. The On/Ready indicator lights, incorporated in the Hot Spring logo on the front of your spa, can be seen even with the cover on. These lights also serve as a helpful diagnostic tool letting you know when your spa needs attention.



## ***Your Favorite Settings***

Store your favorite light and jet settings then quickly recreate your customized setup with the simple press of a button.

## ***Two-Way Communication***

Take the guesswork out of spa ownership. Your control panel provides you with easy-to-read messages that advise you of your spa's status and let you know if attention is required.

## ***Quick Clean***

Perfect for a quick post-soak refresh, or when adding chemicals to the water, our convenient clean cycle circulates spa water for ten minutes.



Remote Spa Monitoring System





# Experience a new level of customer care



## Connect with Peace of Mind

The innovative Connexion® remote spa monitoring system looks after your Hot Spring® spa when you can't and gives you instant access to your spa controls from virtually anywhere in the world. If you're on the go, want to enjoy a spa at a second home, or simply want the peace of mind that your hot tub is being monitored, the Connexion system is the ideal solution.

## Technology That Simplifies Your Life

The Connexion system enables your spa to communicate with a computer or smart device through a cloud-based subscription service via your home Internet service. This patented technology enables your Hot Spring dealer to monitor your spa, and our unique VirtualValet™ messaging feature alerts you and your dealer if your spa needs attention, so regular maintenance or service can be scheduled without delay – even when you are out of town.



## Ready When You Are

The Connexion monitoring system also offers convenient remote access to many spa functions from almost anywhere, so your hot tub can be ready when you want it to be. From your PC or via the free Connexion App downloaded on your smart mobile device, you can adjust water temperature, activate the jets, turn on the spa lock, check filter cleanliness, contact your dealer, and more.

## Connexion System Features

- Global monitoring of spa systems
- VirtualValet messaging feature that can alert you and your dealer if maintenance or service is needed
- Remote access to spa controls



The Connexion remote spa monitoring system is available as a dealer-installed option on all HighLife® Collection models. Ask your Hot Spring dealer for details.

\*US Patents #8,688,280 and #8,838,280

A woman with long brown hair is seen from the side, looking towards a young boy with wet hair who is laughing joyfully in a hot tub. The boy's hands are clasped together near his chest. In the foreground, several streams of water are spraying from a jet. The background is a bright green lawn.

*Get more from  
your hot tub*

**COOLZone**<sup>™</sup>  
Hot Tub Cooling System

# Warm or cool - it's your choice

## Year-Round Enjoyment

On a cool, crisp night, there's nothing like relaxing in your spa with soothing warm water swirling around you. On a hot and sunny day, however, a cool, refreshing dip can be just as nice. With the CoolZone™ Hot Tub Cooling System, your hot tub can heat *and cool* the water – something that is not possible with most hot tubs. As a result, you and your family will use your hot tub more often throughout the year.

## Spend More Time in Your Spa

Your hot tub is an investment, and it's important that you get the maximum usage and enjoyment from it. The CoolZone system increases your options by providing a greater temperature range than traditional spas.

## Your Hot Tub Just Got Cooler

With the CoolZone system, your hot tub can provide you with more than just a warm, relaxing soak. Your Hot Spring spa can also offer a fresh, revitalizing dip on a hot day after working in the yard. It becomes a cool place for the kids to swim and play\* during the day and a warm-water retreat for you to unwind in later that night. For serious athletes, the option to bring the temperature of the water way down can mean soothing relief for muscles after an intense workout. The possibilities are endless.



## Energy-Efficient Flexibility

Similar to the way air conditioning cools your home, the CoolZone system can cool spa water to as low as 60 degrees. And when you're ready to warm things up again, it works with your spa's heater to efficiently raise the temperature in just a few hours\*\* while keeping your energy costs low.

The CoolZone system also helps improve energy efficiency during normal hot tub operation, because it can reduce the amount of time the standard No-Fault® heater runs in order to keep the water hot. Depending on the ambient

temperature where you live, this increased efficiency has the potential to add up to real savings over time.

## Is It Right for Me?

The CoolZone system from Hot Spring is an excellent option for:

- Hot tubbers living in hot climates
- Grandparents and families with small children
- Athletes looking for cold therapy



The CoolZone system is a dealer-installed option on all Highlife Collection spas. Contact your Hot Spring dealer for installation requirements and information.

\*Never leave children unattended around water.

\*\*Depending on ambient temperature and other factors.

Ask your Hot Spring dealer for details.

# *Enhance your hot tub experience*

Whether you are entertaining friends or relaxing with your spouse, our wireless entertainment adds another layer of enjoyment to your experience. You can add these dealer-installed options at any time

# Entertain from inside or outside your spa

## **Solid Sound**

Add wireless entertainment to your Highlife Collection spa. Marine-grade speakers are installed in the bartop to ensure robust, high-quality sound. Enjoy audio from inside or outside the spa with these durable pop-up speakers.

## **Wireless Audio with Bluetooth® Technology**

Stream audio from an online source or use your own library of songs. The choice is yours with our easy-to-use sound system, featuring Bluetooth wireless technology. The sound system features a powerful amplifier and optional subwoofer for increased volume and richer bass tones.



## **High-Definition Hot Tubbing**

Entertainment makes a big splash with an optional 22-inch high-definition display. HDMI and USB connectors accommodate a variety of

streaming and cable devices. This monitor pairs with the wireless audio system.



*Hot Spring spas are “entertainment-ready,” which means these dealer-installed options can be added at any time!*

# Easy access for daily use

You will enjoy your spa more often with the added convenience provided by these Hot Spring<sup>®</sup> Necessaries<sup>®</sup>. These products are specifically designed for your Highlife<sup>®</sup> Collection hot tub, so you can get the most out of your hot water experience. Don't compromise your warranty or your investment by choosing other brands. Insist on genuine Hot Spring Necessaries.

## Open Sesame

Our patented cover lifters make removing and replacing the spa cover easy. By eliminating the need to drag the cover on and off the spa, and keeping it from ever touching the ground, our lifters can help extend the life of your cover. There are four Hot Spring cover lifters available to meet your needs.



## CoverCradle<sup>®</sup>

Let the CoverCradle cover lifter do the heavy lifting for you! For the ultimate in ease, this robust cover lifter offers an ultra-smooth gliding mechanism and the support of dual 40 lb. pneumatic springs to support a cover of any size. Requires 24" minimum clearance (actual clearance may vary depending on spa model and location).



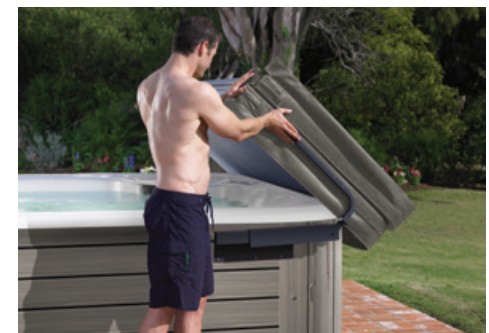
## CoverCradle II

The CoverCradle II is a lighter duty version of the original CoverCradle. Using a single 40 lb. pneumatic spring, this cover lifter makes removal a snap. Requires 24" minimum clearance (actual clearance may vary depending on spa model and location).



## UpRite<sup>®</sup>

Ideal for tight spaces and recessed spa installations, the Uprite cover lifter also provides an element of privacy by holding your folded cover in a vertical position. Requires 7" minimum clearance (actual clearance may vary depending on spa model and location).



## Lift'n Glide<sup>®</sup>

The Lift'n Glide cover lifter is simple to operate: lift the cover, glide it back and enjoy. Requires 14" minimum clearance (actual clearance may vary depending on spa model and location).

## Step Up to Splendor

Entering and exiting your hot tub is easy with a custom-designed Hot Spring spa step. We offer a variety of steps, so you can select the one that best meets your needs.



### Everwood® HD

Made from the same high-definition wood alternative as the spa cabinet, Everwood HD steps feature a modern design, matching colors and will look great for years.



### NXT Step

Developed in conjunction with the exclusive Highlife Collection NXT spas, this contemporary step features Everwood HD siding on each tread, making it a great match for the entire Highlife Collection.



### Polymer

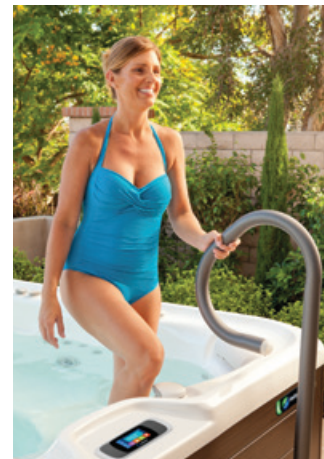
Durable and lightweight, this step provides a stable entry point into your hot tub. The Polymer step is offered in colors that complement the Everwood HD siding. They are eco-friendly—made from 100% recyclable material.

## Spa Side Complements

With these thoughtful spa additions, you can outfit your spa with everything needed for a great experience.

### Spa Side Umbrella

Bring shade to your spa with the 360° rotatable spa side umbrella. Constructed from powder-coated aluminum and zinc-plated steel, this umbrella is rust-resistant with a base plate under the spa cabinet for stability. The 9'9" diameter canopy is available in Crème or Navy Blue.



### Spa Side Handrail

This handrail's base plate slips securely under the spa cabinet for stability, and conveniently swings over the top of your spa — making it easy to reach when entering or exiting. It also features a battery powered LED light for added convenience and safety at night.



### Spa Side Towel Tree

Keep your towel within reach with this easy-to-assemble towel tree, constructed from powder-coated aluminum with a bronze finish that provides a stylish and convenient addition to your hot tub.





# Customer care you can count on

Purchasing a hot tub is, in many ways, like purchasing a car. Your new spa is a significant investment that you will enjoy for years, and over time you may have questions or require some basic service and maintenance support.

With that in mind, it's important that you purchase your spa from a reliable local retailer you can trust. You'll need someone to answer your questions, guide you to the model that's right for you, and be there if you need help – even years after your spa purchase.



## **Your Local Connection**

Hot Spring® retailers are experienced professionals and passionate hot tubbers. They are among the very best retailers in the world. Many of them have been selling and supporting the Hot Spring brand for over twenty five years – and some even longer. With more than 850 sales and service locations worldwide, no matter where you live, you are likely to find an established Hot Spring retailer close by.

## **Trained Professionals**

Our local retailers participate in a wide variety of ongoing training to ensure that they are prepared to serve and support you. So, when you choose Hot Spring, you can expect to encounter helpful sales professionals, skilled service technicians, and a knowledgeable retailer who is committed to taking excellent care of you for as long as you own your spa.

# *The Absolute Best Hot Tub Ownership Experience<sup>®</sup>*



**Committed to Quality**

We are passionate about making the world's best hot tubs and are consistently recognized for outstanding quality and value.



We have received trade-certified recognition by Spasearch.org for ten consecutive years – every year since the certification was introduced.



Our quality system is certified by Lloyd's Register in accordance with ISO9001:2008, the highest international standard for design and manufacturing excellence.



Hot Spring is the only brand that has built and sold more than one million hot tubs.

Hot Spring spas are made by Watkins Wellness, which is a part of Masco Corporation – a Fortune 500 company whose family of quality home products includes:



At Hot Spring®, we are committed to providing you with The Absolute Best Hot Tub Ownership Experience®, which means you can count on excellent quality and customer care from our team, as well as from your local Hot Spring retailer.

**A Name You Can Trust**

Over the years we have built Hot Spring Spas' reputation on quality, and we continue to stand behind the products we sell. As the world's best-selling brand, you can find a Hot Spring spa in more backyards around the world than any other brand. We are the brand of choice in all 50 states, Canada and more than 70 countries. Many of our customers have owned their Hot Spring spa for decades, and have purchased two, three, or even four Hot Spring spas over their lifetime.

**Unparalleled Customer Care**

Our Customer Care Representatives go above and beyond to ensure that we deliver on our promise, and they are not the only ones. Our team at Watkins Wellness™, makers of Hot Spring spas, is dedicated and experienced with an employee tenure exceeding thirteen years. Our culture of integrity, and our commitment to excellence and serving our customers, is what has made us the industry leader.

# GRANDEE®

<b>Seating Capacity</b>	7 adults
<b>Dimensions</b>	8'4" x 7'7" x 38"/2.54m x 2.31m x .97m
<b>Water Capacity</b>	450 gallons/1,700 liters
<b>Weight</b>	1,060 lbs./480 kg dry; 6,040 lbs./2,740 kg filled*
<b>Spa Shell Options</b>	Alpine White, Crème, Ice Gray, Platinum, Tuscan Sun, or Desert**
<b>Cabinet Options</b>	Everwood®HD: Mocha, Monterey Gray or Teak**
<b>Jets - 43 (w/ Stainless Steel Trim)</b>	2 Moto-Massage® DX jets (2) 2 SoothingStream® jets 3 JetStream® jets 2 Rotary Hydromassage jets 2 Directional Hydromassage jets 30 Directional Precision® jets
<b>Water Feature</b>	BellaFontana® with 3 illuminated arcs of water
<b>Water Care System (Optional)</b>	ACE® Salt Water System or EverFresh® System
<b>Jet Pump 1</b>	Wavemaster® 9000; One-speed, 2.5 HP Continuous Duty, 5.2 HP Breakdown Torque
<b>Jet Pump 2</b>	Wavemaster® 9200; Two-speed, 2.5 HP Continuous Duty, 5.2 HP Breakdown Torque
<b>Circulation Pump</b>	SilentFlo 5000® for quiet, continuous filtration
<b>Effective Filtration Area</b>	325 sq. ft., top loading Tri-X® filters 100% no-bypass filtration
<b>Ozone System</b>	FreshWater® III Corona Discharge
<b>Control System</b>	IQ 2020® with touchscreen control panel 230v/50amp, 60Hz, Includes G.F.C.I. protected sub-panel
<b>Lighting System</b>	Luminescence® multi-color four-zone
<b>Heater</b>	No-Fault®, 4000w/230v
<b>Energy Efficiency</b>	Certified to the APSP 14 National Standard and the California Energy Commission (CEC) in accordance with California law
<b>Vinyl Cover</b>	3.5" to 2.5" tapered, 2 lb. density foam core, with hinge seal in Caramel, Chocolate, Slate, or Evergreen
<b>Cover Lifter (Optional)</b>	CoverCradle®, CoverCradle II, Lift 'n Glide® or UpRite®
<b>Steps (Optional)</b>	Everwood® HD, NXT or Polymer
<b>Entertainment System (Optional)</b>	Wireless Entertainment

\* Includes water and 7 adults weighing 175 lbs. each

\*\*Some color combinations are considered special orders. Ice Gray/Teak, Crème/Monterey Gray, Desert/Monterey Gray, and Platinum/Teak have special order pricing. See your dealer for details. Export models available in 230v, 50Hz, 1500w Heater



Grandee shown with Alpine White shell



Grandee shown with Alpine White shell /  
Mocha cabinet and Everwood® HD step

*"I can't tell you the number of compliments we have received about its style, looks, and those wonderful Moto-Massage jets. Very quiet, and the minimum water maintenance surprised me. Best investment we ever made."*

*- Grandee Owner, New York*



Envoy shown with Desert shell

*“The Envoy spa is very spacious.  
My kids, 7 and 9, love going in.  
The color and water features make  
it fun for them in the evenings.  
For us adults it is very relaxing at  
the end of the day, too”*

*- Envoy Owner, California*



Envoy shown with Desert shell /  
Teak cabinet and NXT step

## ENVOY®

<b>Seating Capacity</b>	5 adults
<b>Dimensions</b>	7'9" x 7'7" x 38"/2.36m x 2.31m x .97m
<b>Water Capacity</b>	390 gallons/1,475 liters
<b>Weight</b>	950 lbs./430 kg dry; 5,080 lbs./2,305 kg filled*
<b>Spa Shell Options</b>	Alpine White, Crème, Ice Gray, Platinum, Tuscan Sun, or Desert**
<b>Cabinet Options</b>	Everwood®HD: Mocha, Monterey Gray or Teak**
<b>Jets - 43 (w/ Stainless Steel Trim)</b>	1 Moto-Massage® DX jet (2) 2 SoothingStream® jets 3 JetStream® jets 2 Rotary Hydromassage jets 3 Directional Hydromassage jets 10 HydroStream® jets 2 Rotary Precision® jets 19 Directional Precision® jets
<b>Water Feature</b>	BellaFontana® with 3 illuminated arcs of water
<b>Water Care System (Optional)</b>	ACE® Salt Water System or EverFresh® System
<b>Jet Pump 1</b>	Wavemaster® 9000; One-speed, 2.5 HP Continuous Duty, 5.2 HP Breakdown Torque
<b>Jet Pump 2</b>	Wavemaster® 8200; Two-speed, 2.0 HP Continuous Duty, 4.0 HP Breakdown Torque
<b>Circulation Pump</b>	SilentFlo 5000® for quiet, continuous filtration
<b>Effective Filtration Area</b>	325 sq. ft., top loading Tri-X® filters 100% no-bypass filtration
<b>Ozone System</b>	FreshWater® III Corona Discharge
<b>Control System</b>	IQ 2020® with touchscreen control panel 230v/50amp, 60Hz, Includes G.F.C.I. protected sub-panel
<b>Lighting System</b>	Luminescence® multi-color four-zone
<b>Heater</b>	No-Fault®, 4000w/230v
<b>Energy Efficiency</b>	Certified to the APSP 14 National Standard and the California Energy Commission (CEC) in accordance with California law
<b>Vinyl Cover</b>	3.5" to 2.5" tapered, 2 lb. density foam core, with hinge seal in Caramel, Chocolate, Slate, or Evergreen
<b>Cover Lifter (Optional)</b>	CoverCradle®, CoverCradle II, Lift 'n Glide® or UpRite®
<b>Steps (Optional)</b>	Everwood® HD, NXT or Polymer
<b>Entertainment System (Optional)</b>	Wireless Entertainment

\* Includes water and 5 adults weighing 175 lbs. each

\*\*Some color combinations are considered special orders. Ice Gray/Teak, Crème/Monterey Gray, Desert/Monterey Gray, and Platinum/Teak have special order pricing. See your dealer for details. Export models available in 230v, 50Hz, 1500w Heater

# ARIA®

<b>Seating Capacity</b>	5 adults
<b>Dimensions</b>	7'3" x 7'3" x 36"/2.20m x 2.20m x .91m
<b>Water Capacity</b>	325 gallons/1,225 liters
<b>Weight</b>	820 lbs./370 kg dry; 4,405 lbs./1,995 kg filled*
<b>Spa Shell Options</b>	Alpine White, Crème, Ice Gray, Platinum, Tuscan Sun, or Desert**
<b>Cabinet Options</b>	Everwood® HD: Mocha, Monterey Gray or Teak**
<b>Jets - 35 (w/ Stainless Steel Trim)</b>	1 Moto-Massage® DX jet (2) 2 SoothingStream® jets 2 JetStream® jets 2 Rotary Hydromassage jets 5 Directional Hydromassage jets 4 HydroStream® jets 18 Directional Precision® jets
<b>Water Feature</b>	BellaFontana® with 3 illuminated arcs of water
<b>Water Care System (Optional)</b>	ACE® Salt Water System or EverFresh® System
<b>Jet Pump 1</b>	Wavemaster® 9000; One-speed, 2.5 HP Continuous Duty, 5.2 HP Breakdown Torque
<b>Jet Pump 2</b>	Wavemaster® 8200; Two-speed, 2.0 HP Continuous Duty, 4.0 HP Breakdown Torque
<b>Circulation Pump</b>	SilentFlo 5000® for quiet, continuous filtration
<b>Effective Filtration Area</b>	325 sq. ft., top loading Tri-X® filters 100% no-bypass filtration
<b>Ozone System</b>	FreshWater® III Corona Discharge
<b>Control System</b>	IQ 2020® with touchscreen control panel 230v/50amp, 60Hz, Includes G.F.C.I. protected sub-panel
<b>Lighting System</b>	Luminescence® multi-color four-zone
<b>Heater</b>	No-Fault®, 4000w/230v
<b>Energy Efficiency</b>	Certified to the APSP 14 National Standard and the California Energy Commission (CEC) in accordance with California law
<b>Vinyl Cover</b>	3.5" to 2.5" tapered, 2 lb. density foam core, with hinge seal in Caramel, Chocolate, Slate, or Evergreen
<b>Cover Lifter (Optional)</b>	CoverCradle®, CoverCradle II, Lift 'n Glide® or UpRite®
<b>Steps (Optional)</b>	Everwood® HD, NXT or Polymer
<b>Entertainment System (Optional)</b>	Wireless Entertainment

\* Includes water and 5 adults weighing 175 lbs. each  
\*\*Some color combinations are considered special orders. Ice Gray/Teak, Crème/Monterey Gray, Desert/Monterey Gray, and Platinum/Teak have special order pricing. See your dealer for details.  
Export models available in 230v, 50Hz, 1500w Heater



Aria shown with Alpine White shell



Aria shown with Alpine White shell /  
Monterey Gray cabinet and Everwood® HD step

*“The Aria spa is actually better than a massage therapist! My wife and I have learned that if we leave the jets on and rotate around the seats, it’s almost like getting a full body massage. Wow! We never expected that.”*

*- Aria Owner, Virginia*



Vanguard shown with Ice Gray shell

# VANGUARD®

<b>Seating Capacity</b>	6 adults
<b>Dimensions</b>	7'3" x 7'3" x 36"/2.20m x 2.20m x .91m
<b>Water Capacity</b>	335 gallons/1,275 liters
<b>Weight</b>	820 lbs./370 kg dry; 4,665 lbs./2,125 kg filled*
<b>Spa Shell Options</b>	Alpine White, Crème, Ice Gray, Platinum, Tuscan Sun, or Desert**
<b>Cabinet Options</b>	Everwood®HD: Mocha, Monterey Gray or Teak**
<b>Jets - 38 (w/ Stainless Steel Trim)</b>	2 Moto-Massage® DX jet (2) 2 SoothingStream® jets 2 JetStream® jets 2 Rotary Hydromassage jets 1 Directional Hydromassage jets 27 Directional Precision® jets
<b>Water Feature</b>	BellaFontana® with 3 illuminated arcs of water
<b>Water Care System (Optional)</b>	ACE® Salt Water System or EverFresh® System
<b>Jet Pump 1</b>	Wavemaster® 8000; One-speed, 2.0 HP Continuous Duty, 4.0 HP Breakdown Torque
<b>Jet Pump 2</b>	Wavemaster® 9200; Two-speed, 2.5 HP Continuous Duty, 5.2 HP Breakdown Torque
<b>Circulation Pump</b>	SilentFlo 5000® for quiet, continuous filtration
<b>Effective Filtration Area</b>	325 sq. ft., top loading Tri-X® filters 100% no-bypass filtration
<b>Ozone System</b>	FreshWater® III Corona Discharge
<b>Control System</b>	IQ 2020® with touchscreen control panel 230v/50amp, 60Hz, Includes G.F.C.I. protected sub-panel
<b>Lighting System</b>	Luminescence® multi-color four-zone
<b>Heater</b>	No-Fault®, 4000w/230v
<b>Energy Efficiency</b>	Certified to the APSP 14 National Standard and the California Energy Commission (CEC) in accordance with California law
<b>Vinyl Cover</b>	3.5" to 2.5" tapered, 2 lb. density foam core, with hinge seal in Caramel, Chocolate, Slate, or Evergreen
<b>Cover Lifter (Optional)</b>	CoverCradle®, CoverCradle II, Lift 'n Glide® or UpRite®
<b>Steps (Optional)</b>	Everwood® HD, NXT or Polymer
<b>Entertainment System (Optional)</b>	Wireless Entertainment

\* Includes water and 6 adults weighing 175 lbs. each  
\*\*Some color combinations are considered special orders. Ice Gray/Teak, Crème/Monterey Gray, Desert/Monterey Gray, and Platinum/Teak have special order pricing. See your dealer for details.  
Export models available in 230v, 50Hz, 1500w Heater

*“Now that we are in our Vanguard spa every day we keep asking ourselves why we didn’t buy this ten or fifteen years ago. For sure, we will never be without a Hot Spring spa in the future!”*

*- Vanguard Owner, New York*



Vanguard shown with Ice Gray shell / Monterey Gray cabinet and Everwood® HD step

# SOVEREIGN®

<b>Seating Capacity</b>	6 adults
<b>Dimensions</b>	6'8" x 7'9" x 33"/2.03m x 2.36m x .84m
<b>Water Capacity</b>	315 gallons/1,200 liters
<b>Weight</b>	745 lbs./340 kg dry; 4,425 lbs./2,020 kg filled*
<b>Spa Shell Options</b>	Alpine White, Crème, Ice Gray, Platinum, Tuscan Sun, or Desert**
<b>Cabinet Options</b>	Everwood®HD: Mocha, Monterey Gray or Teak**
<b>Jets - 28 (w/ Stainless Steel Trim)</b>	1 Moto-Massage® DX jet (2) 2 SoothingStream® jets 1 JetStream® jet 2 Rotary Hydromassage jets 3 Directional Hydromassage jets 18 Directional Precision® jets
<b>Water Feature</b>	BellaFontana® with 3 illuminated arcs of water
<b>Water Care System (Optional)</b>	ACE® Salt Water System or EverFresh® System
<b>Jet Pump</b>	Wavemaster® 9200; Two-speed, 2.5 HP Continuous Duty, 5.2 HP Breakdown Torque
<b>Circulation Pump</b>	SilentFlo 5000® for quiet, continuous filtration
<b>Effective Filtration Area</b>	195 sq. ft., top loading Tri-X® filters 100% no-bypass filtration
<b>Ozone System</b>	FreshWater® III Corona Discharge
<b>Control System</b>	IQ 2020® with touchscreen control panel 230v/50amp, 60Hz, Includes G.F.C.I. protected sub-panel
<b>Lighting System</b>	Luminescence® multi-color four-zone
<b>Heater</b>	No-Fault®, 6000w/230v
<b>Energy Efficiency</b>	Certified to the APSP 14 National Standard and the California Energy Commission (CEC) in accordance with California law
<b>Vinyl Cover</b>	3.5" to 2.5" tapered, 2 lb. density foam core, with hinge seal in Caramel, Chocolate, Slate, or Evergreen
<b>Cover Lifter (Optional)</b>	CoverCradle®, CoverCradle II, Lift 'n Glide® or UpRite®
<b>Steps (Optional)</b>	Everwood® HD, NXT, or Polymer
<b>Entertainment System (Optional)</b>	Wireless Entertainment

\* Includes water and 6 adults weighing 175 lbs. each

\*\*Some color combinations are considered special orders. Ice Gray/Teak, Crème/Monterey Gray, Desert/Monterey Gray, and Platinum/Teak have special order pricing. See your dealer for details. Export models available in 230v, 50Hz, 1500w Heater



Sovereign shown with Alpine White shell



Sovereign shown with Alpine White shell /  
Mocha cabinet

*“The quality is outstanding.  
I have not had even one issue  
with the spa. Easy to maintain.  
Hardly noticed the small amount  
of electricity this uses, even in  
below zero wind chills here in  
northern Indiana.”*

*- Sovereign Owner, Indiana*





Prodigy shown with Ice Gray shell

*“We wish we would have bought this spa years ago. It’s physical therapy for the whole body. The jets are strong and you can feel them work those aches and pains away.”*

*- Prodigy Owner, Oregon*



Prodigy shown with Ice Gray shell / Monterey Gray cabinet

## PRODIGY®

<b>Seating Capacity</b>	5 adults
<b>Dimensions</b>	6’6” x 7’ x 33”/1.98m x 2.13m x .84m
<b>Water Capacity</b>	290 gallons/1,100 liters
<b>Weight</b>	645 lbs./295 kg dry; 3,940 lbs./1,795 kg filled*
<b>Spa Shell Options</b>	Alpine White, Crème, Ice Gray, Platinum, Tuscan Sun, or Desert**
<b>Cabinet Options</b>	Everwood® HD: Mocha, Monterey Gray or Teak**
<b>Jets - 22 (w/ Stainless Steel Trim)</b>	1 Moto-Massage® DX jet (2) 2 SoothingStream® jets 1 JetStream® jets 2 Rotary Hydromassage jets 1 Directional Hydromassage jets 14 Directional Precision® jets
<b>Water Care System (Optional)</b>	ACE® Salt Water System or EverFresh® System
<b>Jet Pump</b>	Wavemaster® 7000; One-speed, 1.65 HP Continuous Duty, 3.5 HP Breakdown Torque
<b>Circulation Pump</b>	SilentFlo 5000® for quiet, continuous filtration
<b>Effective Filtration Area</b>	90 sq. ft., top loading 100% no-bypass filtration
<b>Ozone System</b>	FreshWater® III Corona Discharge
<b>Control System</b>	IQ 2020® with touchscreen control panel 115v/20amp, (includes G.F.C.I. protected power cord) or 230v/50amp, 60Hz***
<b>Lighting System</b>	Luminescence® multi-color four-zone
<b>Heater</b>	No-Fault®, 1500w/115v or 6000w/230v
<b>Energy Efficiency</b>	Certified to the APSP 14 National Standard and the California Energy Commission (CEC) in accordance with California law
<b>Vinyl Cover</b>	3.5” to 2.5” tapered, 2 lb. density foam core, with hinge seal in Caramel, Chocolate, Slate, or Evergreen
<b>Cover Lifter (Optional)</b>	CoverCradle®, CoverCradle II, Lift ‘n Glide® or UpRite®
<b>Steps (Optional)</b>	Everwood® HD, NXT, or Polymer
<b>Entertainment System (Optional)</b>	Wireless Entertainment

\* Includes water and 5 adults weighing 175 lbs. each

\*\*Some color combinations are considered special orders. Ice Gray/Teak, Crème/Monterey Gray, Desert/Monterey Gray, and Platinum/Teak have special order pricing. See your dealer for details.

\*\*\*G.F.C.I. protected sub-panel required in 230v mode

Export models available in 230v, 50Hz, 1500w Heater, (Wavemaster 8000; One-speed, 2.0 HP Continuous Duty, 4.0 HP Breakdown Torque), & Tri-X® filters

# JETSETTER®

<b>Seating Capacity</b>	3 adults
<b>Dimensions</b>	7' x 5'5" x 29"/2.13m x 1.65m x .74m
<b>Water Capacity</b>	200 gallons/750 liters
<b>Weight</b>	475 lbs./215 kg dry; 2,670 lbs./1,205 kg filled*
<b>Spa Shell Options</b>	Alpine White, Crème, Ice Gray, Platinum, Tuscan Sun, or Desert**
<b>Cabinet Options</b>	Everwood®HD: Mocha, Monterey Gray or Teak**
<b>Jets - 14 (w/ Stainless Steel Trim)</b>	1 Moto-Massage® DX jet (2) 1 JetStream® jet 2 Rotary Hydromassage jets 1 Directional Hydromassage jet 4 HydroStream® jets 4 Directional Precision® jets
<b>Water Care System (Optional)</b>	ACE® Salt Water System or EverFresh® System
<b>Jet Pump</b>	Wavemaster® 7000; One-speed, 1.65 HP Continuous Duty, 3.5 HP Breakdown Torque
<b>Circulation Pump</b>	SilentFlo 5000® for quiet, continuous filtration
<b>Effective Filtration Area</b>	90 sq. ft., top loading 100% no-bypass filtration
<b>Ozone System</b>	FreshWater® III Corona Discharge
<b>Control System</b>	IQ 2020® with touchscreen control panel 115v/20 amp (includes G.F.C.I. protected power cord) or 230v/50amp, 60 Hz***
<b>Lighting System</b>	Luminescence® multi-color four-zone
<b>Heater</b>	No-Fault®, 1500w/115v or 6000w/230v
<b>Energy Efficiency</b>	Certified to the APSP 14 National Standard and the California Energy Commission (CEC) in accordance with California law
<b>Vinyl Cover</b>	3.5" to 2.5" tapered, 1.5 lb. density foam core, with hinge seal in Caramel, Chocolate, Slate, or Evergreen
<b>Cover Lifter (Optional)</b>	CoverCradle®, CoverCradle II, Lift 'n Glide® or UpRite®
<b>Steps (Optional)</b>	Everwood® HD, NXT, or Polymer
<b>Entertainment System (Optional)</b>	Wireless Entertainment

\* Includes water and 3 adults weighing 175 lbs. each  
 \*\*Some color combinations are considered special orders. Ice Gray/Teak, Crème/Monterey Gray, Desert/Monterey Gray, and Platinum/Teak have special order pricing. See your dealer for details.  
 \*\*\*G.F.C.I. Protected sub-panel required in 230v mode  
 Export models available in 230v, 50Hz, 1500w Heater, (Wavemaster® 9000; One-speed, 2.5 HP Continuous Duty, 5.2 HP Breakdown Torque), & Tri-X filters



Jetsetter shown with Platinum shell



Jetsetter shown with Platinum shell / Monterey Gray cabinet

*“I use my spa daily and don’t know what I would do without it. I am an avid tennis player and my spa makes it possible to play five days a week at the young age of 63.”*

*- Jetsetter Owner, Florida*

We established the industry standard of a 5-year component warranty in 1989. Our warranty remains comprehensive and straightforward, and we are proud to disclose in detail before you purchase. This is our pledge of quality to you.

## Highlife® Collection Limited Warranty Coverage

Watkins Wellness™ (“Watkins”) warrants to the original consumer purchaser (“you”) the following about your new Highlife Collection Hot Spring spa, when purchased from an authorized dealer/service provider (“dealer”).

### 7 Year Shell Surface Warranty

Watkins warrants the acrylic surface material of the Highlife Collection Hot Spring portable spa to be free from defects in materials and workmanship for seven years. Additionally, the acrylic surface material is structurally warranted not to leak for a period of seven years. The acrylic surface material is non-permeable and will not absorb odors, bacteria or pollutants.

### 5 Year No Leak Plumbing Warranty

Watkins warrants the Hot Spring spa against leaks caused by defects in manufacturing and workmanship for five years. This warranty specifically covers leaks from the wall fittings, jet fittings, internal plumbing, internal glue joints, drains, hoses, and all bonded parts.

### 5 Year Component Warranty

Watkins warrants the electrical components, pumps, jets including the Moto-Massage jets, air valves, levers, bezels and other Hot Spring spa components against defects in materials and workmanship for five years. Some parts, most of which can be changed out without the use of tools, such as filter cartridges, filter lid, spa pillows and cover locks, are not included in this warranty, but are warranted to be free from defects in materials and workmanship at the time of delivery. Spa covers and other spa accessories are specifically excluded from this warranty, although they may be covered by other warranties. Please check with your Hot Spring dealer for details.

### 5 Year No-Fault® Heater Warranty

Watkins unconditionally warrants the No-Fault heater to be free from defects in materials and workmanship for five years. This warranty defines unconditional, with the exclusion of commercial or industrial use, and improper installation, as warranty coverage provided that the component has failed to operate properly within the spa's system.

### 5 Year Everwood® / Everwood HD Cabinet Warranty

Watkins warrants the Everwood cabinet material to be free from defects in materials and workmanship for five years. This warranty specifically covers the cabinet's structural integrity (exclusive of surface stain), including the material and assembly.

The Everwood cosmetic finish is warranted to be free from defects in materials and workmanship at the time of initial delivery. Fading and weathering of the surface will occur naturally over time, and are not defects. To restore the appearance of the Everwood cabinet, refer to the spa Owner's Manual for proper care and maintenance instructions.

### 2 Year Light Assembly Warranty

Watkins warrants the LED light assemblies, which consists of all lights within the spa, including the underwater and bartop lighting, to be free from defects in materials and workmanship for two years.

### 1 Year FreshWater III® Ozone Warranty

Watkins warrants the electrical components, ozone tubing, check valve, injector, corona discharge cell and exterior housing of the Freshwater III corona discharge ozone purification system against defects in material and workmanship for one year.

### 1 Year Wireless Remote Control Battery Warranty

Watkins warrants the battery in the wireless remote control panel against defects in material and workmanship for one year. For replacement of the battery refer to the spa Owner's Manual for proper care and installation directions.

The following applies to all the warranties listed:

### EXTENT OF WARRANTY

This warranty extends only to the original consumer purchaser of the HOT SPRING spa when purchased and originally installed within the country of purchase. This warranty begins on your delivery date of the spa, but in no event later than one year from the date of purchase. This warranty terminates upon any transfer of ownership, or if the spa is installed or relocated outside the country of purchase by the original consumer purchaser prior to the expiration of the warranty period.

### WARRANTY PERFORMANCE

To make a claim under this warranty, contact your dealer. In the event you are unable to obtain service from the dealer, please contact Watkins Manufacturing Corporation, at 1280 Park Center Drive, Vista, California, 92081, Attn: Customer Service Department (800) 999-4688 or 1-760-598-6464 for customers outside of US or via e-mail, [custsvc@watkinsmfg.com](mailto:custsvc@watkinsmfg.com). You must give Watkins and/or your dealer written notice of any warranty claim, along with a copy of your original purchase receipt indicating the date of the purchase, within ten (10) days of the time you discover the claim. Watkins reserves the right to inspect the malfunction or defect on location.

Watkins or its Authorized Service Agent will repair any defects covered by this warranty. Except as described herein, you will not be charged for parts, labor or the freight costs for parts necessary to repair the spa for defects covered by this warranty. In some cases, the servicing dealer may charge you a reasonable repairperson travel/service charge that is not covered by this warranty. Please contact the dealer for information regarding any such charges.

### LIMITATIONS

Except as described above, this warranty does not cover defects or damage due to normal wear and tear, improper installation, alteration without Watkins' prior written consent, accident, acts of God, misuse, abuse, commercial or industrial use, use of an accessory not approved by Watkins, failure to follow the Watkins Pre-Delivery Instructions or Owner's Manual, or repairs made or attempted by anyone other than an authorized representative of Watkins. Alteration includes, but is not limited to, any component or plumbing change, or electrical conversion. Visit [www.hotspring.com](http://www.hotspring.com) or contact your dealer for a list of manufacturer approved accessories.

### DISCLAIMERS

**TO THE EXTENT PERMITTED BY LAW, WATKINS SHALL NOT BE LIABLE FOR LOSS OF USE OF THE SPA OR OTHER INCIDENTAL OR CONSEQUENTIAL COSTS, EXPENSES, OR DAMAGES, INCLUDING BUT NOT LIMITED TO THE REMOVAL OF ANY DECK OR CUSTOM FIXTURE OR ANY COST TO REMOVE OR REINSTALL THE SPA, IF NEEDED.** Some states do not allow the exclusion or limitation of incidental or consequential damages, so the above limitations may not apply to you. **ANY IMPLIED WARRANTIES, INCLUDING THE IMPLIED WARRANTIES OF MERCHANTABILITY AND FITNESS FOR A PARTICULAR PURPOSE, ARE LIMITED TO THE DURATION OF THE APPLICABLE WARRANTY STATED ABOVE.** Some states do not allow limitations on how long an implied warranty may last, so the above limitations may not apply to you.

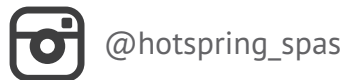
### LEGAL REMEDIES

This warranty gives you specific legal rights, and you may have other rights which vary from state to state.



Visit our website:  
hotspring.com

Find us on social media:



#HotSpringSpas



**We print our brochures on only Forest Stewardship Council (FSC) paper.** Printed in the USA on recycled paper that contains 10% post-consumer waste and is FSC certified. FSC ensures that the paper in our brochures contains fiber from well-managed and responsibly harvested forests. Please pass this catalog on or recycle again.

© 2018 Watkins Wellness, 1280 Park Center Drive, Vista, California 92081. All rights reserved. Specifications, colors, and surface materials subject to change without notice. Not all features are available on all products. Printed in USA. Hot Spring, Highlife, Grandee, Envoy, Aria, Vanguard, Sovereign, Prodigy, Jetsetter, The Absolute Best Hot Tub Ownership Experience, Every day made better, ACE, BellaFontana, Clean Screen, Comfort Control, Connexion, CoolZone, CoverCradle, Earth Smart, Energy Smart, EverFresh, Everwood, FootWell, FreshWater, FreshWaterAg+, HydroStream, IQ 2020, Jet-Cluster, JetStream, Lift 'n Glide, Luminescence, Moto-Massage, Necessories, No-Fault, Nobody Backs You Better, Precision, Quartet, SilentFlo 5000, Smartlet, SoothingStream, SpaStone, Spring, Tri-X, UpRite, Vanishing Act, VirtualValet, and Wavemaster are trademarks of Watkins Manufacturing Corporation. Delta is a registered trademark of Masco Corporation of Indiana. Ecovaluation is a registered trademark of Masco Home Services, Inc. KraftMaid is a registered trademark of Masco Cabinetry LLC. Behr is a registered trademark of Behr Process Corporation. The BEST BUY Seal is a registered trademark of Consumers Digest Communications, LLC, used under license. All 230v models must be installed by a licensed electrician in accordance with local codes. US Patents #5,724,478; #5,742,953; #5,810,257; #5,810,262; #5,819,332; #5,924,850; #5,943,711; #6,195,811; #6,381,766B1; #6,435,691; #6,596,951; #6,621,985; #6,859,952; #6,873,793; #6,976,636; #7,162,752; #7,219,690; #7,472,430; #7,472,431; #8,273,254; #8,266,736; #8,465,650; #8,688,280; #8,838,280; D518896; D531729; D611612; D620599; D620600; D621947; D624657; D634019; D634020; D634021 and other patents pending



Ready to become  
a hot tubber? Scan  
to learn more about  
Hot Spring Spas!



\$5.95  
PN 63013  
Rev. E