



ENDLESS POOLS® FITNESS SYSTEMS 2020 COLLECTION

Benefits

SWIM

You won't find a better swim. The original Endless Pools® Swim Machine uses a hydraulically-powered propulsion system engineered to ensure a variable and smooth flow of water.



RUN/WALK

The Endless Pools underwater treadmill is the only one of its kind. Its hydraulically-powered system makes it easy to enjoy low-impact running or walking at home.



EXERCISE

With the resistance bands, Aqua Bike and other optional equipment, you can build strength in a near-weightless environment. No strain—all gain!



PLAY

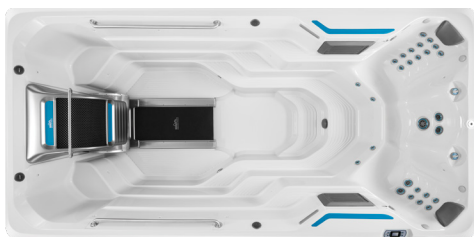
Not all fitness is physical. Feed your emotional well-being by enjoying playtime with your family and friends.



RELAX

Manufactured in the same facility as leading Watkins Wellness® hot tub brands, our spa experts design the hydromassage features to ensure your post-workout cool-down is as amazing as your workout.

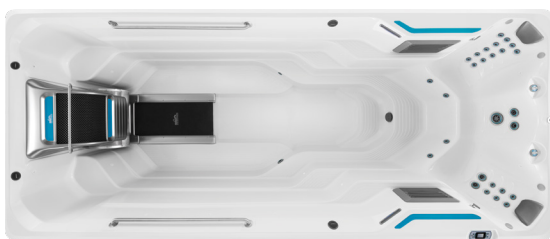




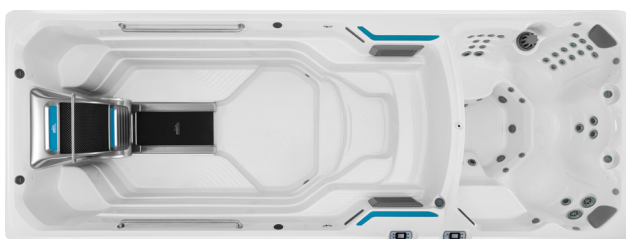
E500 (15ft L x 89in W x 58in D)



E550 (15ft L x 94in W x 58in D)



E700 (17ft L x 89in W x 58in D)



E2000 (20ft L x 89in W x 58in D)

The Magic is in the Machine®.

Swim in place against a steady stream of water so smooth you'll think you are swimming in open water.

Run and walk with 360 degrees of resistance and water's buoyancy protecting your joints and muscles from impact.

In an Endless Pools® Fitness System there is no limit to accomplishing a beneficial full-body workout. Swim, bike, walk, exercise, then relax against soothing hydromassage jets, anytime you want, in the comfort of home.

i Shown with optional underwater treadmill

SHELL & CABINET COLOR OPTIONS



Arctic White
shell



Ice Gray
shell

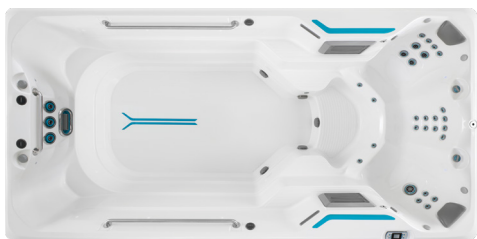


Dark Mocha
cabinet

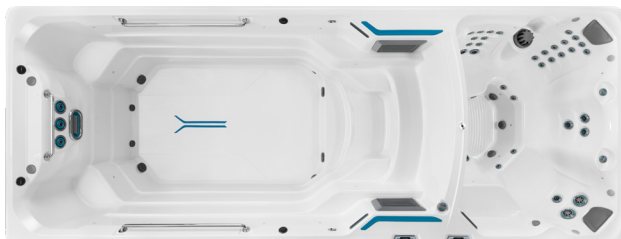


Gray Oak
cabinet





X500 (15ft L x 89in W x 50in D)



X2000 (20ft L x 89in W x 58in D)

SHELL & CABINET COLOR OPTIONS



Arctic White
shell



Ice Gray
shell



Mocha
cabinet



Gray
cabinet

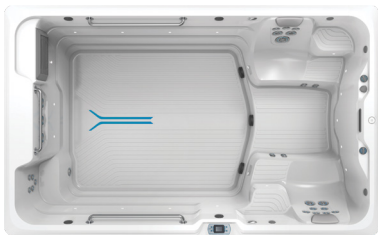
Exercise that fits your life.

Feel water's resistance for any exercise regimen, any time of day.

Swim and enjoy a jetted swim like no other 'swim spa.' Three round Swim Jets (on top) provide resistance, while the River Jet (below) provides lift. All jets use a boost effect to draw in more water, multiplying the volume. Using the two diverter valves, users can adjust the highly variable pace of the current for both swim and water-workout options.

With SwimCross® Exercise Systems, convenience and versatility are abound so that staying active and maintaining a busy schedule are not mutually exclusive. Never again ask "how will I fit a workout into my day," with a SwimCross Exercise System just steps from your door.





R200 (12ft L x 89in W x 50in D)



R500 (15ft L x 89in W x 50in D)

SHELL & CABINET COLOR OPTIONS



Arctic White
shell



Ice Gray
shell



Mocha
cabinet



Gray
cabinet

Fitness isn't always physical.

Time spent with family and friends, or enjoying solitary relaxation are as beneficial to our well-being as physical fitness. RecSport® Recreation Systems are purposely designed so that both recreation and time for fitness are within reach, at an affordable price.

i DID YOU KNOW?

Water's buoyancy makes you feel up to 90 percent lighter and provides 360 degrees of resistance!



Accessories



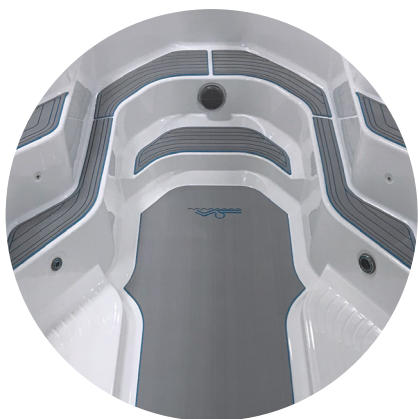
Aqua Bike



Resistance Bands



Bluetooth Sound System



SwimDek® Surface Kits



Endless Pools Fit@Home® App



For more information visit our website: [EndlessPools.com](https://www.EndlessPools.com)

©2020 Watkins Wellness, 1280 Park Center Drive, Vista, CA 92081. All rights reserved. Endless Pools, SwimCross, RecSport, Your Space. Your Pace., Wellness Without Limits, The Magic is in the Machine, Endless Pools Fit@Home, Tri-Thermic, Hot Spring, Caldera, ProLift, Upright, CoverCradle are registered trademarks of Watkins Wellness. Delta is a registered trademark of Delta Faucet Company, Behr is a registered trademark of Behr Process Corporation, KraftMaid is a registered trademark of Masco Cabinetry LLC and Milgard is a registered trademark of Milgard Manufacturing Incorporated. The Bluetooth word mark is a trademark owned by Bluetooth SIG, Inc., VacuSeal is a trademark of Hot Tub Products, LLC., SwimDek is a registered trademark of SeaDek, Inc. Specifications subject to change without notice. Patents pending. All rights reserved.